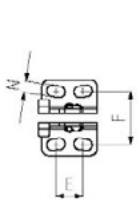
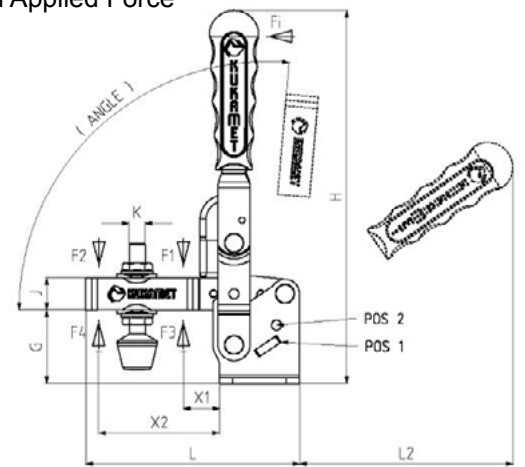
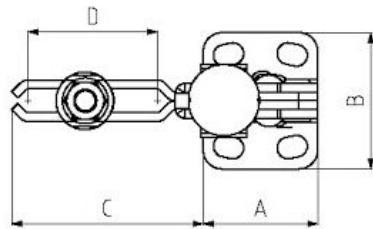


211 - Vertical Toggle Clamps

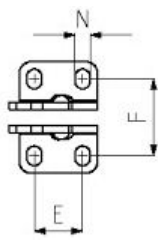
Body Mounting Base: Horizontal

Part Number	F1 (kg)	F2 (kg)	F3 (kg)	F4 (kg)	Fi		Compression Screw	Angle	
					F1:Fi	F2:Fi		POS1	POS2
19-211-0	56	35	71	46	10:1	5:1	M4 x 25	115 °	-
19-211-1	76	51	101	69	12:1	8:1	M5 x 35	105 °	-
19-211-2	122	71	142	94	12:1	7.5:1	M6 x 40	105 °	-
19-211-3	203	142	254	159	11:1	8:1	M8 x 50	105 °	-
19-211-4	305	203	336	224	11.5:1	8:1	M10 x 70	135 °	105 °
19-211-5	458	254	509	305	12:1	7:1	M12 x 80	135 °	105 °

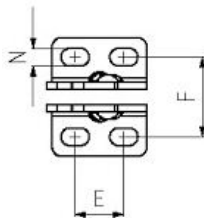
F1-F2 Exerting Force. F3-F4 Holding Capacity. Fi Applied Force



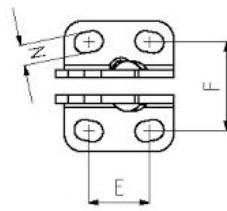
19-211-0



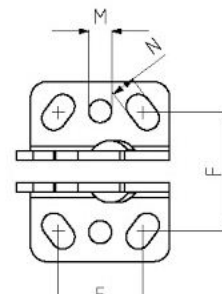
19-211-1



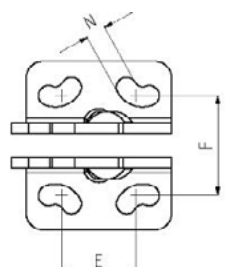
19-211-2



19-211-3



19-211-4



19-211-5

Part Number	A	B	C	D	E	F	G	H	J	K	L	L2	M	N	X1	X2
19-211-0	25	34	31	20	9-15.5	23.5-24	18	85	8	M4	56	50	-	5 x 8	11	22
19-211-1	26	37	44	26	16	24-27	23	125	10	M5	70	75	-	5 x 6.5	18	34
19-211-2	32	40	62	42	13-20	27	26	141	13	M6	94	85	-	6 x 9.5	20	50
19-211-3	40	47.5	67	42	19-25	31.5 - 32.5	37	187	16	M8	107	110	-	7.5 x 10.5	25	52
19-211-4	52	67	100	67	28-34.5	40 - 48.5	47	240	20	M10	152	160	8.5	9 x 14.5	34	82
19-211-5	65	75	130	88	24.5 - 45	44.5 - 52	58	263	25	M12	195	165	-	9 x 19.5	42	107