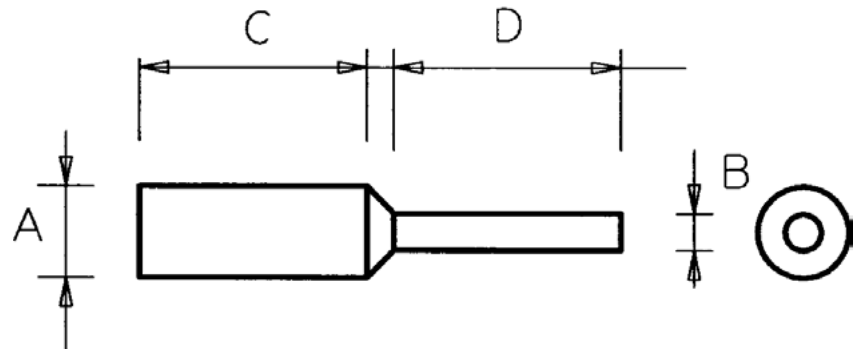
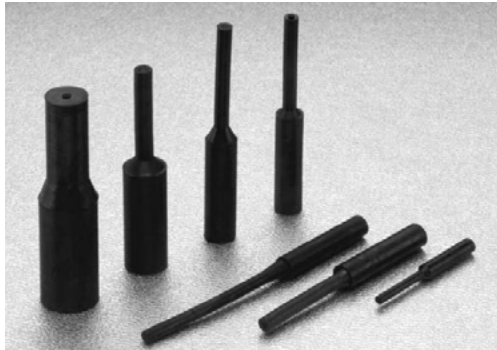


## Pull Plugs—EPDM & Silicone

Designed to provide tight seals on both ends of threaded and non-threaded through holes.



### EPDM

The EPDM material will resist temperatures up to 246°C and is specifically designed for electroplating & E-coating applications. Colour Black

### Silicone

The silicone material will resist temperatures up to 316°C and is specifically designed for powder coating and E-coating applications. Colour Clear.

Choose a diameter slightly larger than the hole to mask. The plug will stretch when pulled through the hole by its tab and then relax to provide an air tight seal.

Plugs can be re-used many times.  
Will not contaminate paint line.  
Will withstand multiple passes.  
Through most coating processes.

Custom sizes available with minimal tooling investment.

Silicone Part Number	EPDM Part Number	A (mm)	B (mm)	C (mm)	D (mm)
12-SLL017	12-EPL017	1.7	1.2	15.9	15.9
12-SLL023	12-EPL023	2.4	1.6	15.9	15.9
12-SLL027	12-EPL027	2.8	1.6	15.9	15.9
12-SLL029	12-EPL029	3.0	2.1	25.4	25.4
12-SLL031	12-EPL031	3.2	2.1	15.9	15.9
12-SLL033	12-EPL033	3.3	2.1	15.9	15.9
12-SLL035	12-EPL035	3.6	2.1	15.9	15.9
12-SLL039	12-EPL039	4.0	2.1	15.9	15.9
12-SLL040	12-EPL040	4.0	2.4	25.4	25.4
12-SLL041	12-EPL041	4.1	2.4	15.9	15.9
12-SLL047	12-EPL047	4.8	2.8	15.9	15.9
12-SLL050	12-EPL050	5.0	2.8	25.4	25.4
12-SLL055	12-EPL055	5.5	2.8	25.4	25.4
12-SLL057	12-EPL057	5.7	3.2	25.4	25.4
12-SLL065	12-EPL065	6.5	3.3	25.4	25.4
12-SLL069	12-EPL069	7.0	3.3	24.1	24.1
12-SLL071	12-EPL071	7.1	3.5	25.4	25.4
12-SLL085	12-EPL085	8.5	4.0	25.4	25.4
12-SLL088	12-EPL088	8.9	4.0	22.9	22.9
12-SLL098	12-EPL098	9.9	4.0	25.4	25.4
12-SLL101	12-EPL101	10.1	4.0	25.4	25.4
12-SLL118	12-EPL118	11.9	6.4	25.4	25.4
12-SLL129	12-EPL129	12.9	6.4	25.4	25.4
12-SLL134	12-EPL134	13.5	6.4	25.4	25.4
12-SLL155	12-EPL155	15.5	6.4	25.4	25.4
12-SLL162	12-EPL162	16.3	9.5	25.4	25.4
12-SLL177	12-EPL177	17.8	9.5	25.4	25.4
12-SLL185	12-EPL185	18.5	8.0	25.4	25.4
12-SLL205	12-EPL205	20.5	8.0	25.4	25.4
12-SLL227	12-EPL227	22.8	9.5	25.4	25.4
12-SLL259	12-EPL259	25.9	9.5	25.4	25.4