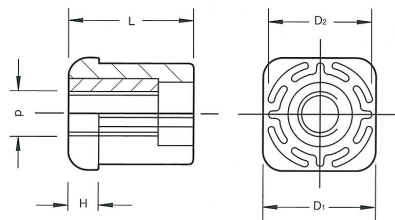
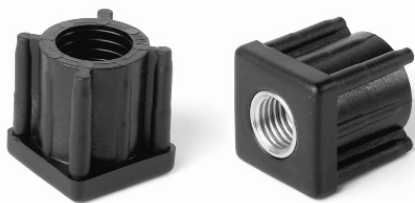


## 4268 - Square Threaded Tube Ends - Metric Threads

Reinforced Polyamide, Black Colour with Brass Inserts

Part Number	D	Tube Wall	D2	d	H	L	Kg*
11-NPSQ20B8	20x20	1.5	17	M8	5	23	450
11-NPSQ25B8	25x25	1.5	22	M8	6	26	450
11-NPSQ25B10	25x25	1.5	22	M10	6	26	500
11-NPSQ25B12	25x25	1.5	22	M12	6	26	550
11-NPSQ30B10	30x30	1.5	27	M10	6	31	500
11-NPSQ30B12	30x30	1.5	27	M12	6	31	550
11-NPSQ30B14	30x30	1.5	27	M14	6	31	600
11-NPSQ30B16	30x30	1.5	27	M16	6	31	650
11-NPSQ35B10	35x35	1.5	32	M10	8	38	700
11-NPSQ35B12	35x35	1.5	32	M12	8	38	750
11-NPSQ35B14	35x35	1.5	32	M14	8	38	800
11-NPSQ35B16	35x35	1.5	32	M16	8	38	850
11-NPSQ35B20	35x35	1.5	32	M20	8	38	900
11-NPSQ40B10/1	40x40	1.5	37	M10	8	38	750
11-NPSQ40B12/1	40x40	1.5	37	M12	8	38	800
11-NPSQ40B14/1	40x40	1.5	37	M14	8	38	850
11-NPSQ40B16/1	40x40	1.5	37	M16	8	38	900
11-NPSQ40B20/1	40x40	1.5	37	M20	8	38	950
11-NPSQ40B10/2	40x40	2	36	M10	8	38	750
11-NPSQ40B12/2	40x40	2	36	M12	8	38	800
11-NPSQ40B14/2	40x40	2	36	M14	8	38	850
11-NPSQ40B16/2	40x40	2	36	M16	8	38	900
11-NPSQ40B20/2	40x40	2	36	M20	8	38	950
11-NPSQ50B12/1	50x50	1.5	47	M12	10	45	800
11-NPSQ50B14/1	50x50	1.5	47	M14	10	45	850
11-NPSQ50B16/1	50x50	1.5	47	M16	10	45	900
11-NPSQ50B20/1	50x50	1.5	47	M20	10	45	950
11-NPSQ50B12/2	50x50	2	46	M12	10	45	800
11-NPSQ50B14/2	50x50	2	46	M14	10	45	850
11-NPSQ50B16/2	50x50	2	46	M16	10	45	900
11-NPSQ50B20/2	50x50	2	46	M20	10	45	950



\* Max Static Load

## 4282 - Rectangular Threaded Tube Ends

Reinforced Polyamide, Black Colour with Brass Inserts

Part Number	Ext Dim	Tube Wall	Int Dim	d	H	L	Kg*
11-NPRT2050B8	20x50	2	16x46	M8	5	28	450
11-NPRT4080B16	40x80	2	36x76	M16	10	45	900
11-NPRT4080B20	40x80	2	36x76	M20	10	45	950
11-NPRT50150B16	50x150	3	44x144	M16	10	45	900
11-NPRT44144B20	50x150	3	44x144	M20	10	45	950
11-NPRT54114B16	60x120	3	54x114	M16	10	45	900
11-NPRT54114B20	60x120	3	54x114	M20	10	45	950

